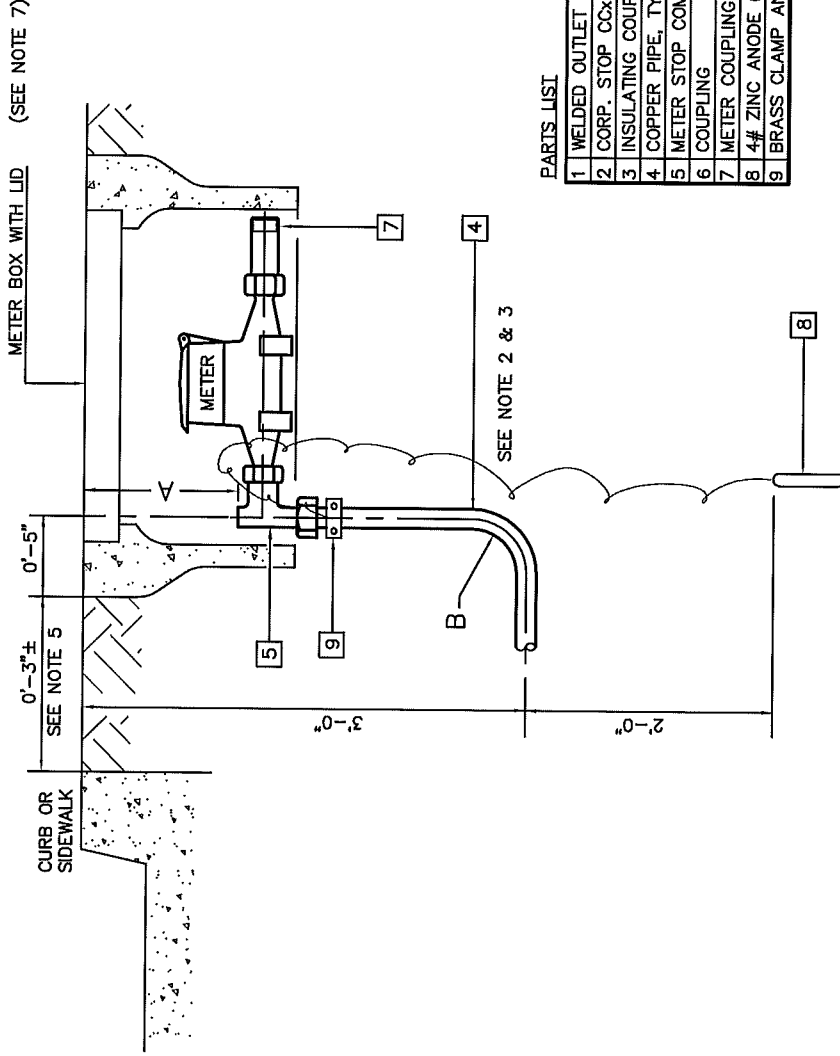


METER SIZE	METER BOX	METER LID	DESCRIPTION
5/8"	BX9	FLX9D	FIBER LYTE LID
1"	B16	FL16D	FIBER LYTE LID
1-1/2"	B30	FL30D	FIBER LYTE LID
2"	B36	B36E	CEMENT LID

METER SIZE	A	B	Ø
5/8" & 1"	0'-7"	1'-0"	45°
1-1/2" & 2"	0'-9"	1'-6"	0°



PARTS LIST

1	WELDED OUTLET
2	CORP. STOP COUPLING
3	INSULATING COUPLING
4	COPPER PIPE, TYPE K
5	METER STOP COMPxFIP
6	COUPLING
7	METER COUPLING
8	4# ZINC ANODE (USE 12# FOR SERVICE RUNS > TO 20 FT.)
9	BRASS CLAMP AND SCREWS

THIS STANDARD REPLACES NMWD STD-A-14  
 NMWD STD-A-15 SHEET 1  
 NMWD STD-A-16

**NOTES:**

- SEE NMWD TECHNICAL SPECIFICATION 15000 FOR MATERIAL REQUIREMENTS.
- BEFORE BACKFILLING, PRIME AND COAL TAR WRAP COPPER LATERAL FROM CORPORATION STOP TO POINT OF CONTACT WITH NATIVE SOIL. IF ENTIRE LATERAL IS BACK FILLED WITH PEA AND SAND WRAPPING IS NOT NECESSARY.
- SEE NMWD TECHNICAL SPECIFICATION 02223 FOR TRENCHING & BACKFILLING REQUIREMENTS.
- NMWD WILL BEND 2" COPPER PIPE
- FOR 1-1/2" METER SIZE AND LARGER STANDARD WATER SERVICE INSTALLATIONS USE:
  - FULL CIRCLE CLAMP EXISTING ACP MAIN
  - TAPPED CAST IRON COUPLING AT NEW ACP MAIN
- ALONG STREETS WITH NO CURB OR SIDEWALK METER BOX SHALL BE INSTALLED AS FAR AS POSSIBLE AWAY FROM EDGE OF PAVEMENT AS DIRECTED BY THE DISTRICT.
- SERVICE SADDLE SHALL NOT BE INSTALLED W/ IN 18" OF VALVE, JOINT OR FITTING.
- PAINT PURPLE FOR RECYCLED WATER

METER SIZE	
5/8"	1"
1"x3" LG	1-1/2" & 2"
1"x1"	2"x3" LG
1"	2"x2"
1"	2"
1"	2"
1"	2"
1" W/1x3/4" ADAP.	2"

NORTH MARIN WATER DISTRICT  
 NOVATO, CALIFORNIA

**STANDARD WATER SERVICE INSTALLATION**  
 5/8" TO 2" IN SIZE

APPROVED	DATE	REV.	STD. NO.
<i>[Signature]</i>	12/2/10	3	15