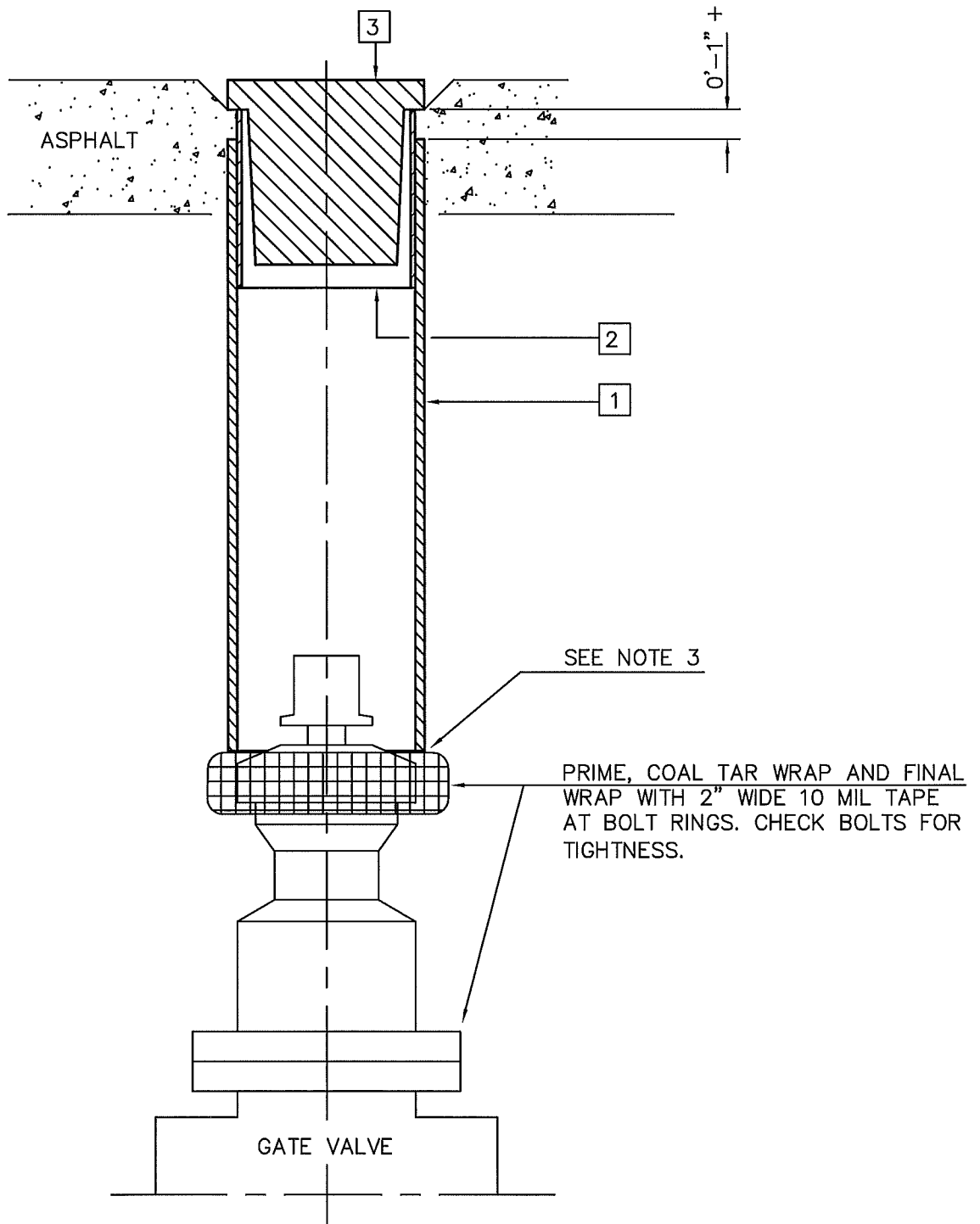


Mar 08, 2011 - 7:36am W:\JOB\MISC\STD\2.dwg User: ACANTILLER



NOTES:

- 1) IN NON PAVED AREAS PLACE 24"DIA x 4" THICK BLACK TOP AROUND VALVE RISER. TWO NOTCHES SHALL BE MADE IN CONCRETE FOR EASY REMOVAL OF COVER.
- 2) FOR VALVE RISER EXTENSION USE 6" PVC COUPLING.
- 3) FOR 2" GATE VALVES RISER SHOULD BE RAISED AND NOT CONTACT THE BOLT RING OR PIPE.
- 4) REMOVE ALL DEBRIS FROM VALVE OPERATING NUT.
- 5) REFER TO STD. NO. 22 FOR COLOR CODING OF VALVE COVERS.

SEE NOTE 3

PRIME, COAL TAR WRAP AND FINAL WRAP WITH 2" WIDE 10 MIL TAPE AT BOLT RINGS. CHECK BOLTS FOR TIGHTNESS.

PARTS LIST

1	6" PVC PIPE CLASS 160, SDR-26
2	6"DIA x 0'-6" ALUMINIUM PIPE
3	6" CAST IRON VALVE COVER, MARKED "NMWD" (SEE STD. NO. 22)

NORTH MARIN WATER DISTRICT
NOVATO, CALIFORNIA

VALVE RISER

APPROVED	DATE	REV.	STD. NO.
<i>[Signature]</i>	12/2/10	2	2

THIS STANDARD REPLACES NMWD STD-A-2