

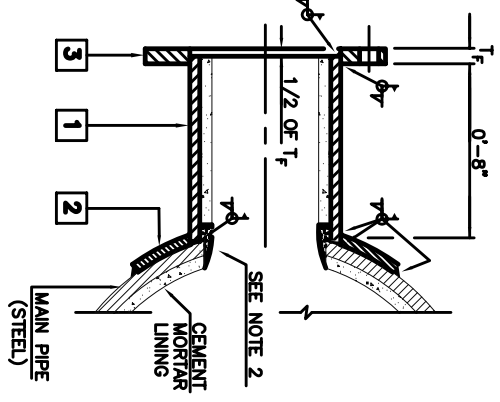
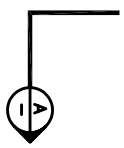
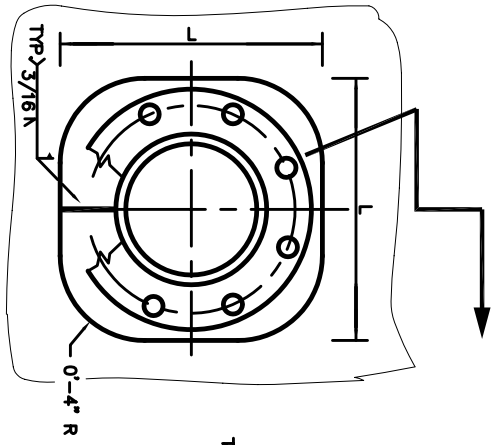
MAIN PIPE NOMINAL SIZE	4	6	8	10	12	14	16	18	20	24	30
OD	4.500	6.625	8.625	10.750	12.750	14.000	16.000	18.000	20.000	24.000	30.000
WALL THICKNESS	0.237	0.280	0.322	0.365	0.406	0.1345	0.1345	0.1345	0.1345	0.1875	0.1875

NOMINAL SIZE	WRAPPER/COLLAR PLATE															
	BRANCH PIPE			WRAPPER/COLLAR PLATE												
OD	WALL THICKNESS	PLATE THICKNESS	LENGTH (L)													
4	4.500	0.237	0.1875	8	8	8	8	8	8	8	8	8	8	8	8	9
6	6.625	0.280	0.1875		12	12	12	12	12	12	12	12	12	12	13	13
8	8.625	0.322	0.1875			15	15	15	15	15	15	15	15	15	17	17
10	10.750	0.365	0.1875				18	18	18	18	18	18	18	18	21	21
12	12.750	0.406	0.1875					22	22	22	22	22	22	25	25	25
14	14.000	0.1345	0.1875						W	W	W	W	W	24	28	28
16	16.000	0.1345	0.1875							W	W	W	W	W	32	32
18	18.000	0.1345	0.1875								W	W	W	W	W	36
20	20.000	0.1345	0.1875									W	W	W	W	40
24	24.000	0.1875	0.1875										W	W	W	W
30	30.000	0.1875	0.1875											W	W	W

THIS STANDARD NOT APPLICABLE FOR OUTLETS 9) WHERE BRANCH PIPE SIZE > MAIN PIPE SIZE

b) WHERE WRAPPER REQUIRED (W)

NOTE: ALL TABLE VALUES ARE IN INCHES



- NOTES:**
- 1) WELDING SHOWN MAY EITHER BE SHOP OR FIELD PERFORMED.
  - 2) CEMENT MORTAR LINING SHALL BE EXTENDED INTO THE INTERIOR OF THE BRANCH PIPE AND SHALL BE COMPLETELY AND SMOOTHLY FINISHED BY HAND.

THIS STANDARD REPLACES NMWD STD-A-25

PARTS LIST:			
1	BRANCH PIPE (STEEL PIPE, CEMENT LINED, COAL TAR WRAPPED.)		
2	WRAPPER/COLLAR PLATE (STEEL TO BE ASTM A36)		
3	SLIP-ON WELD FLANGE (STEEL, AWWA C207 CLASS D, 150 PSI)		

NORTH MARIN WATER DISTRICT  
NOVATO, CALIFORNIA

STANDARD FLANGE OUTLET WITH COLLAR PLATE REINFORCEMENT			
APPROVED	DATE	REV.	STD. NO.
	5/16/02	1	9